

**Inside this issue:**

New Design 2014-  
'Johnson 80 Motoryacht'  
pg. 2 - 4

New Design 2014-  
China Built Bass Boats  
pg. 5 - 6

Design News 2014-  
Dibley 66 'Lasca'  
pg. 7 - 8

From The Design Office -  
pg. 9

**New Designs - 2014**

**NEW DESIGNS AND NEWS IN THIS ISSUE**



**facebook**

**Find us on Facebook:**

Updated News, Results and Launchings that don't make the Newsletter, make our Facebook Page. Come and visit.

Google Search  
'Dibley Marine Facebook'

**WE ARE ALSO ON THE WEB!**  
[www.dibleymarine.com](http://www.dibleymarine.com)

**DIBLEY MARINE SERVICES**

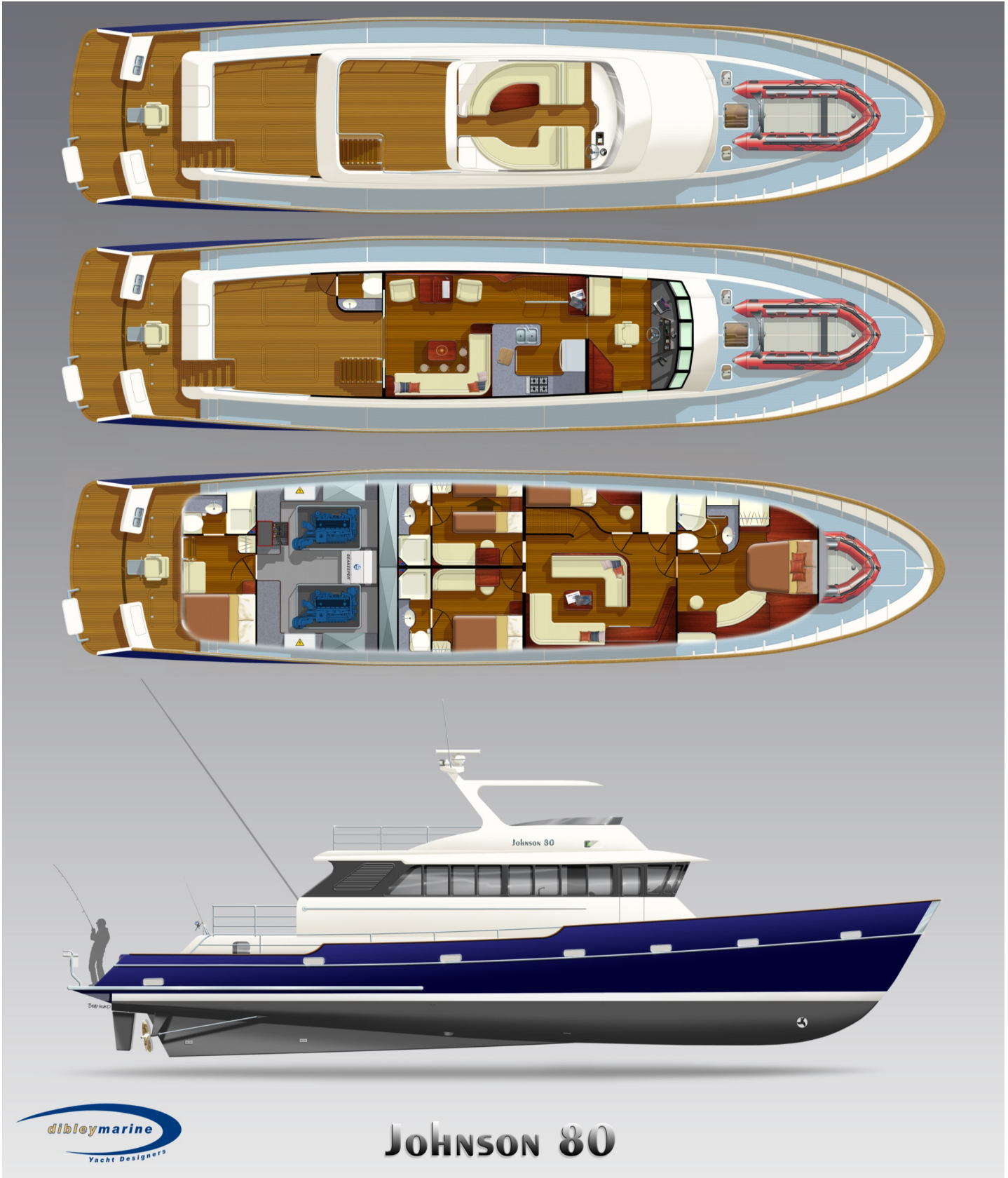
- Naval Architecture
- Yacht Design
- Design Modifications
- Stability, STIX, AVS & Trim Analysis
- Keel and Rudder Design
- VPP & Performance Analysis
- Racing & Cruising Yachts
- Planing & Displacement Launches
- Design Reviews
- Project Management

Recognised member



**DMG Ltd. - Auckland and Queenstown**  
P.O.Box 46-167 Herne Bay, Auckland, New Zealand  
Ph: +64 (0) 275 933 692; Email: [info@dibleymarine.com](mailto:info@dibleymarine.com)  
Web: [www.dibleymarine.com](http://www.dibleymarine.com)

NEW DESIGN FOR 2014  
**JOHNSON 80 MOTORYACHT**



Recognised member



**DMG Ltd. - AUCKLAND & QUEENSTOWN**  
KEVIN DIBLEY (MRINA) - Design Director  
P.O.Box 46-167 Herne Bay, Auckland, New Zealand  
Ph: +64 (0) 275 933 692; Email: info@dibleymarine.com  
**Web: www.dibleymarine.com**



NEW DESIGN FOR 2014  
**JOHNSON 80 MOTORYACHT**

Johnson Yachts, based out of Pine Harbour Marina in Auckland, New Zealand, are in the process of building an 80-foot launch for a NZ/Canadian couple living in Australia. Designed in collaboration with NZ yacht designer Kevin Dibley, this new project will be marketed as the Johnson 80 Motoryacht, Designed as a light displacement-to-length motor launch (LDL), she is designed and built to Australian NSCV LR SSC-2B survey requirements.

The design brief to Dibley was for a vessel that has a sleek and low profile, and a very stable and highly efficient hull form. A go anywhere, anytime launch that the couple could use with family and friends both here and abroad. The interior had to allow for good entertainment with a large groups, but also comfortable and private for smaller groups and charter.



LDL, or Light displacement-to-length ratio powerboats are becoming more popular over the past few years due to their efficiency and low power consumption, so Dibley and Johnson studied the concept further and decided this was the best solution to achieve the brief. To do this properly, a low VCG (vertical centre of gravity) had to be implemented to maintain the safety at sea aspect of the design. To help with that stability, the hull will be built in steel and the superstructure in composites. Further to that, all tankage is kept low in the bilges and keel of the hull. Another aspect of the design that was important for the success of this project was for all the major weights, like the engine room and tankage, to be located close to the LCB (longitudinal centre of buoyancy) to reduce pitching in a seaway as well as maintaining constant trim between Full and Lightship loads. To further add comfort and to prevent roll, a Seakeeper Gyroscope will be placed in the bilges of the hull. It is a computer controlled gyroscope that eliminates most boat roll, including the fatigue, anxiety and seasickness that goes with it. Supplied by Twin Disc, the Seakeeper is a game changer in the overall comfort and enjoyment of boating offshore or coastal. The Johnson 80 is powered by twin 740 hp MTU Series 60 engines that produce a very efficient and comfortable 11 knots cruising speeds, but allowing 23 knots when tanks are fully loaded. As the owners will be heading offshore often, this cruising speed is more than required, and yet gladly taken.

NEW DESIGN FOR 2014  
**JOHNSON 80 MOTORYACHT**

The interior comprises two large guest cabins amidships, and a spacious owners cabin forward, as well as a separate 'overflow' cabin/office to port. Separating these cabins is a TV/Entertainment lounge area that is luxurious and open. Right aft with a separate external entrance from the aft cockpit, is a very comfortable spare cabin for those wanting a bit more privacy.

On the main deck is the formal Saloon with panoramic views spaciousness. Forward lies the large and efficient Galley. The Helm Station lies forward and is open to the aft accommodation, but can be closed off when required such as when underway at night. Aft of the formal saloon is the mid deck where there is access to the flybridge and dayhead. Further aft again is the lower aft cockpit with boarding platform and all the space required for deep sea fishing and other water activities and sport.

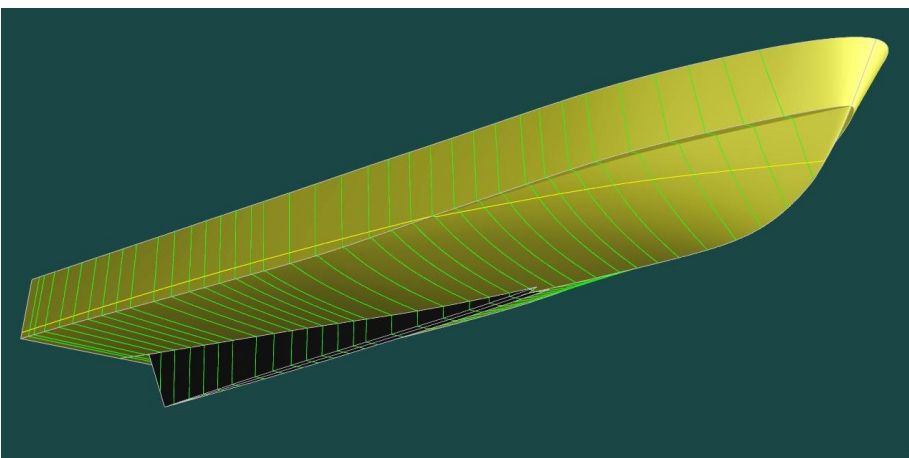


This is a special build combining the aesthetics, ergonomics and efficiency expected in the latest designs offered. Alternative accommodation layouts can be discussed.

All enquiries to Johnson Yachts International Limited;

+64 9 536 6710; [johnsonyachts@xtra.co.nz](mailto:johnsonyachts@xtra.co.nz)

Specifications		
LOA	24.765 m	81' - 3"
LOH	22.965 m	75' - 4"
LWL	21.450 m	70' - 4"
BEAM	5.500 m	18' - 0"
DRAFT (Loaded)	1.418 m	4' - 8"
DISP (Loaded)	48,000 kg	105,820 lb's
DISP (1/2 Load)	42,000 kg	92,593 lb's
POWER	2 x MTU Series60 740hp @2300 rpm	
SPEED (Cruising - Loaded)	12 kn	
SPEED (Max - Loaded)	23 kn	
FUEL	7,500 litres	1,981 USGal
WATER	1,650 litres	436 USGal



Recognised member



**DMG Ltd.** - AUCKLAND & QUEENSTOWN  
 KEVIN DIBLEY (MRINA) - Design Director  
 P.O.Box 46-167 Herne Bay, Auckland, New Zealand  
 Ph: +64 (0) 275 933 692; Email: [info@dibleymarine.com](mailto:info@dibleymarine.com)  
 Web: [www.dibleymarine.com](http://www.dibleymarine.com)



NEW DESIGNS FOR 2014  
**CHINA BUILT 'BASSBOATS'**

Designer's Comment (Kevin Dibley)

A **bass boat** is generally a small boat that is designed and equipped primarily for bass fishing in freshwater such as lakes, rivers and streams. The modern bass boat such as these ones feature swivel chairs that permit the angler to cast to any position around the boat, storage bins for fishing tackle and equipment such as rods and lures, and a live well with recirculating water where caught fish may be stored and kept alive.

It is hugely popular in the USA, and with China's growing obsession with recreational fishing, local boat-builder, David Winter felt there was

a niche market ready to support. David is CEO of the Xiamen boatyard "Red Dragon / Paramount Yacht Building Ltd". With many years experience in the production boatbuilding trade, David and his team are well set up to mass produce these at a competitive price to those being imported in. First production run will be for a 17' and 19' . Further models are also being looked at.

Builder's Comment (David Winter)

Fishing is enormously popular in China on both seaside and inland waters, but few fishermen have access to boats. So unlike most builders who want to build larger boats, we decided a small, affordable fishing-specific boat might have growing potential especially inland. The result is a wide-beam, easily-driven stable hull suitable for different lengths (17 and 19 feet), and different deck configurations. The concept will offer multiple models at different price levels to suit various customer budgets and needs. The initial request was for Kevin to design the highest-level model shown here. The single hull tooling will provide the same stable fishing platform for budget tiller-steered outboard versions, and fully-featured 'go-fast' fishing boats at higher-end. While China's domestic market is the prime direction for this series, export inquiries are invited.

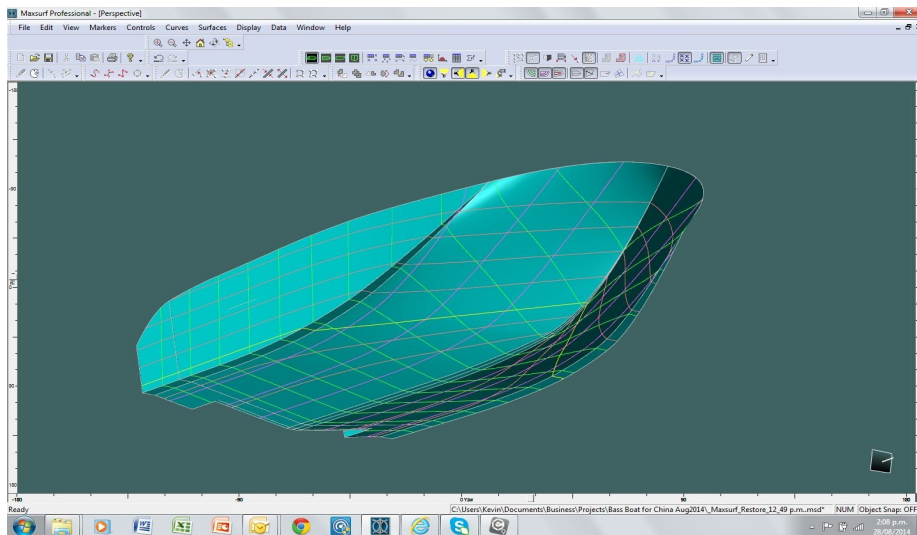


17' Bass Boat



19' Bass Boat

NEW DESIGNS FOR 2014  
**CHINA BUILT 'BASSBOATS' (cont.)**



The process of design is an amazing journey. From Concept sketches, to Preliminary plans, to 3D modeling, then to build, followed by the finished product. The whole matrix is far easier and more enjoyable when a great group of people are involved. David Winter and his team at Red Dragon, are those type of people.

With a proven track record in production yacht building going back many years, the team at Red Dragon can cater for all aspects of the build. From receiving the

plans, to full sea trialing, and everything in between.

With any design / build project, good communication is key, and that certainly makes our job as designers easier from the get-go.

Further enquiries can be made to the builder :  
David Winter;  
dlwinter48@gmail.com

Or to the designer at the details below.



	17-footer	19-footer
LOA (m)	5.375	5.982
LWL (m)	4.347	4.975
BEAM (m)	2.332	2.332
BWL (m)	2.042	2.042
DEADRISE (degree)	12	12
DISP (1/2 load) (kg)	900	1,150
HP / Speed 1 (kn)	50hp / 24kn	70hp / 29kn
HP / Speed 2 (kn)	70hp / 28kn	90hp / 31kn

Recognised member



**DMG Ltd.** - AUCKLAND & QUEENSTOWN  
KEVIN DIBLEY (MRINA) - Design Director  
P.O.Box 46-167 Herne Bay, Auckland, New Zealand  
Ph: +64 (0) 275 933 692; Email: info@dibleymarine.com  
**Web: www.dibleymarine.com**



## DESIGNS NEWS 2014

**'LASCA' - for CHARTER in the Mediterranean**

Usually a designers favorite is the one they are currently working on. In most cases that is true for me as well, but occasionally we get asked what our most favorite one was and one of them would have to be the 66-footer 'Lasca' which was launched as 'Knight Commander' back in 1994. It was one of those design projects where we had the best clients who became life long friends; the best boat builder with Ian Vickers who is a designer in his own right, but as a builder of high composite yachts, is up there with the best; to the experiences of sailing her up and down the coast of New Zealand during sea trials and later just for the companionship and adventure of it all.

She was purchased by a European client a while back and over the last year she received



Beautifully balanced and clocking up the miles at speed



a very thorough refit which brought her back to pristine condition. The next few pages show her as she is now and Lasca can be chartered through our good friend 'Magnus Laurin' who can be found on the Facebook Page <https://www.facebook.com/SyLasca>



Recognised member



**DMG Ltd. - AUCKLAND & QUEENSTOWN**  
KEVIN DIBLEY (MRINA) - Design Director  
P.O.Box 46-167 Herne Bay, Auckland, New Zealand  
Ph: +64 (0) 275 933 692; Email: [info@dibleymarine.com](mailto:info@dibleymarine.com)  
**Web: [www.dibleymarine.com](http://www.dibleymarine.com)**



DESIGNS NEWS 2014

**‘LASCA’ - for CHARTER in the Mediterranean (cont.)**



Underwater lights and Boarding Platform down

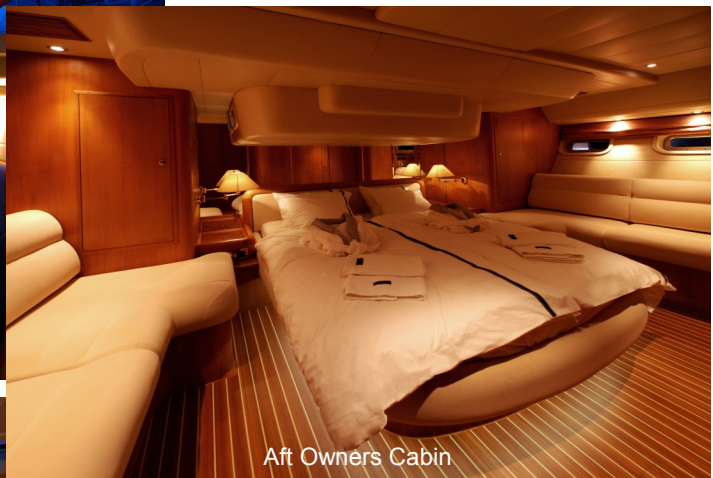
Lasca can be found on our website and further information can be sent if you email us at the below address.  
If you are looking for a true performance cruiser, this would have to be the first choice.



Upper Lounge and view from companionway



Owners ensuite



Aft Owners Cabin



Lower Dining and Galley—guest cabins forward



Skipper—Magnus Laurin



**WE ARE ON THE WEB!**  
[www.dibleymarine.com](http://www.dibleymarine.com)

### Sailing Links and News

**Brad Heald**  
[www.2illustrate.com](http://www.2illustrate.com)

**Tayana Yacht Sales Ltd.**  
[www.tayana.com](http://www.tayana.com)

**Westlawn Institute of Marine Technology**  
[www.westlawn.edu](http://www.westlawn.edu)

**Sailing Anarchy**  
[www.sailinganarchy.com](http://www.sailinganarchy.com)

**New Zealand Marine**  
[www.nzmarine.com](http://www.nzmarine.com)

**Team DM (IOM, Marblehead)**  
[www.ohope.co.nz/iom/DM2](http://www.ohope.co.nz/iom/DM2)

**Asian Yachting**  
[www.asianyachting.com](http://www.asianyachting.com)

**History of IOR Blog**  
[www.rbsailing.blogspot.co.nz/](http://www.rbsailing.blogspot.co.nz/)

### From the Design Office:

With enough projects on the board, we felt we could squeeze in one more Newsletter before the end of the year. A yacht designer rarely has one project going at one time. Usually there are a multitude of design projects that range from the simple such as weight distribution studies, to the full blown design from a clean sheet of paper.

We work with a group of fellow designers and specialists that allow us to spread our design services to all aspects of the trade. From the bottom of the keel to the Windex up top and everything in between. Thank you 'Team' for making this year another to be proud of, and I look forward to working with you all in 2015. Merry Christmas and Happiest for 2015.



Kevin Dibley (Auckland, NZ)

# Merry Christmas and Happy New Year

LAKE WAKATIPU, QUEENSTOWN, NEW ZEALAND

Recognised member

  
**NZmarine**  
INDUSTRY ASSOCIATION

**DMG Ltd. - Auckland and Queenstown**  
P.O.Box 46-167 Herne Bay, Auckland, New Zealand  
Ph: +64 (0) 275 933 692; Email: [info@dibleymarine.com](mailto:info@dibleymarine.com)  
Web: [www.dibleymarine.com](http://www.dibleymarine.com)